

DATA SHEET: T5 HYBRID MODEL TYPE A+B LED TUBE

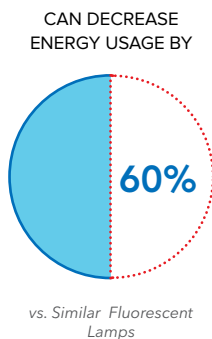
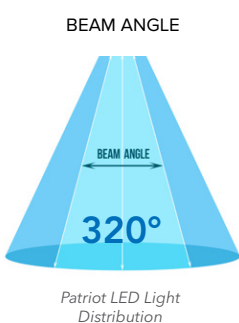
DESCRIPTION

Our T5 Hybrid Model Type A+B LED Tube dual function which can work with specific ballast is an energy saving product as special replacement for traditional fluorescent T5 lamps.

Our T5 Hybrid Model Type A+B LED Tubes are backed with our industry-leading 100,000-hour rated lamp life and 10-year warranty. Contact us for pricing or more information.

PERFORMANCE SUMMARY

- 2 in 1: Ballast compatible, double-ended ballast bypass.
- Input Voltage: AC 120-277V 50/60 Hz
- Current leakage protection: passed UL1993 new standard.
- Safety: Constant current, constant power when work with HO ballast without any Arc Discharge issue.
- Easy for stocking, can save 50% stock space.
- Reduces energy consumption up to 60%.
- Shatterproof design: Meets NSF requirements Automatic production, high product consistency.
- Standard Warranty: 5 years (10 years optional).
- Standard Lifetime: 100,000 hours.
- Certification: UL Listed, UL Classified, DLC Listed.



ORDERING MODEL

BRAND	TUBE	SIZE	WATTAGE	TYPE	CCT
PT	T5	2FT	10W	AB1 = A+B	3000K
		3FT	15W		3500K
		4FT	24W		4000K
			5000K		
Product Code: example					
PTT5-4FT-15W AB1 - 5000K					

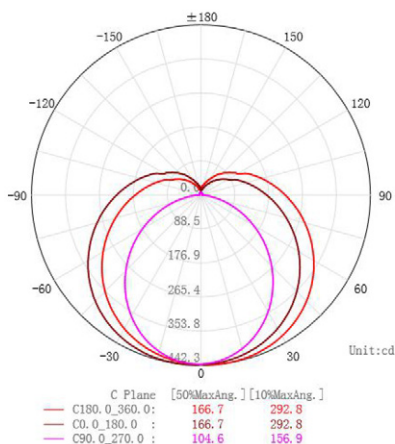
PRODUCT SPECIFICATION

PRODUCT NO.	BAA/TAA OPTION*	WATTAGE	INPUT VOLTAGE	CCT	LUMEN (B)	LUMEN EFFICIENCY (B)	CRI	POWER FACTOR	BEAM ANGLE
T5 2FT HYBRID MODEL									
PTT5-2FT-10W AB1	Yes	10W	100-277 VAC 50/60Hz	3000K/3500K	1250lm	150lm/W	83	0.95	320°
T5 3FT HYBRID MODEL									
PTT5-3FT-10W AB1	Yes	10W	100-277 VAC 50/60Hz	3000K/3500K	1250lm	150lm/W	83	0.95	320°
T5 4FT HYBRID MODEL									
PTT5-4FT-15W AB1	Yes	15W	100-277 VAC 50/60Hz	3000K/3500K	2100lm	150lm/W	83	0.95	320°
PTT5-4FT-15W AB1	Yes	15W	100-277 VAC 50/60Hz	4000K/5000K	2300lm	150lm/W	83	0.95	320°
PTT5-4FT-24W AB1	Yes	24W	100-277 VAC 50/60Hz	3000K/3500K	3000lm	150lm/W	83	0.95	320°
PTT5-4FT-24W AB1	Yes	24W	100-277 VAC 50/60Hz	4000K/5000K	3200lm	150lm/W	83	0.95	320°

PHYSICAL DATA

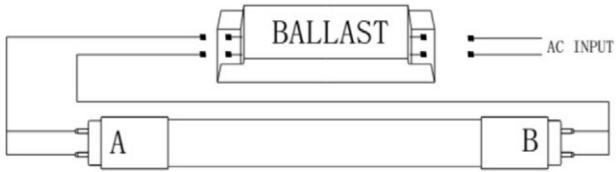
PRODUCT NO.	HOUSING MATERIAL	TARGET LAMP	SIZE	RATED LIFE	WARRANTY	CERTIFICATION
PTT5-2FT-10W AB1	Glass + PC inside		2FT	100,000 hours	5 year (10 year optional)	UL Listed, UL Classified, DLC Listed
PTT5-3FT-10W AB1	Glass + PC inside		3FT	100,000 hours	5 year (10 year optional)	UL Listed, UL Classified, DLC Listed
PTT5-4FT-15W AB1	Glass + PC inside	28W/48 T5He	4FT	100,000 hours	5 year (10 year optional)	UL Listed, UL Classified, DLC Listed
PTT5-4FT-15W AB1	Glass + PC inside	28W/48 T5He	4FT	100,000 hours	5 year (10 year optional)	UL Listed, UL Classified, DLC Listed
PTT5-4FT-24W AB1	Glass + PC inside	54W/48 T5Ho	4FT	100,000 hours	5 year (10 year optional)	UL Listed, UL Classified, DLC Listed
PTT5-4FT-24W AB1	Glass + PC inside	54W/48 T5Ho	4FT	100,000 hours	5 year (10 year optional)	UL Listed, UL Classified, DLC Listed

Distribution Diagram

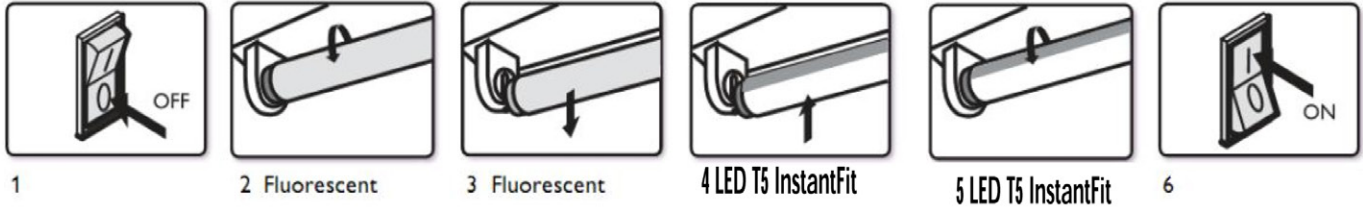


Installation Instructions

TYPE A(Ballast compatible) - Assembly introduction:

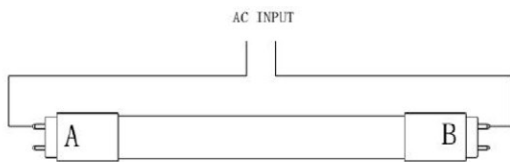


Type A Installation Guide:



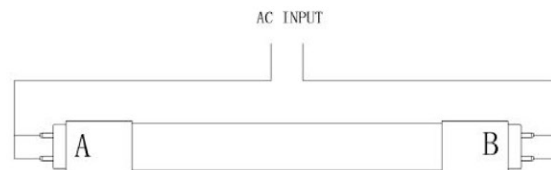
TYPE B (AC directly, double end ballast bypass) - Assembly introduction:

3.



Input voltage:120-277V 50/60Hz

4.



Input voltage:120-277V 50/60Hz